

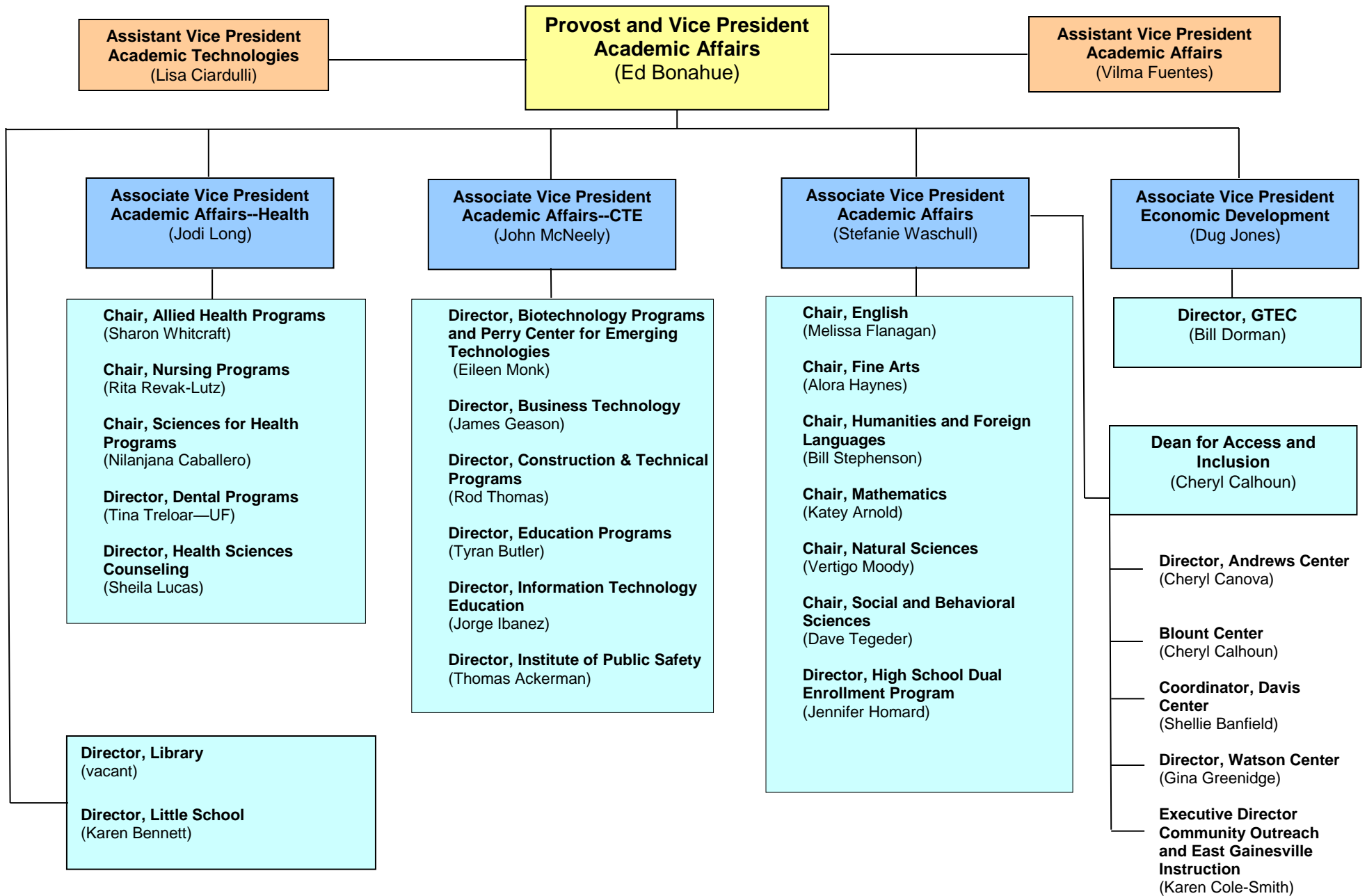


Santa Fe College Rules Manual

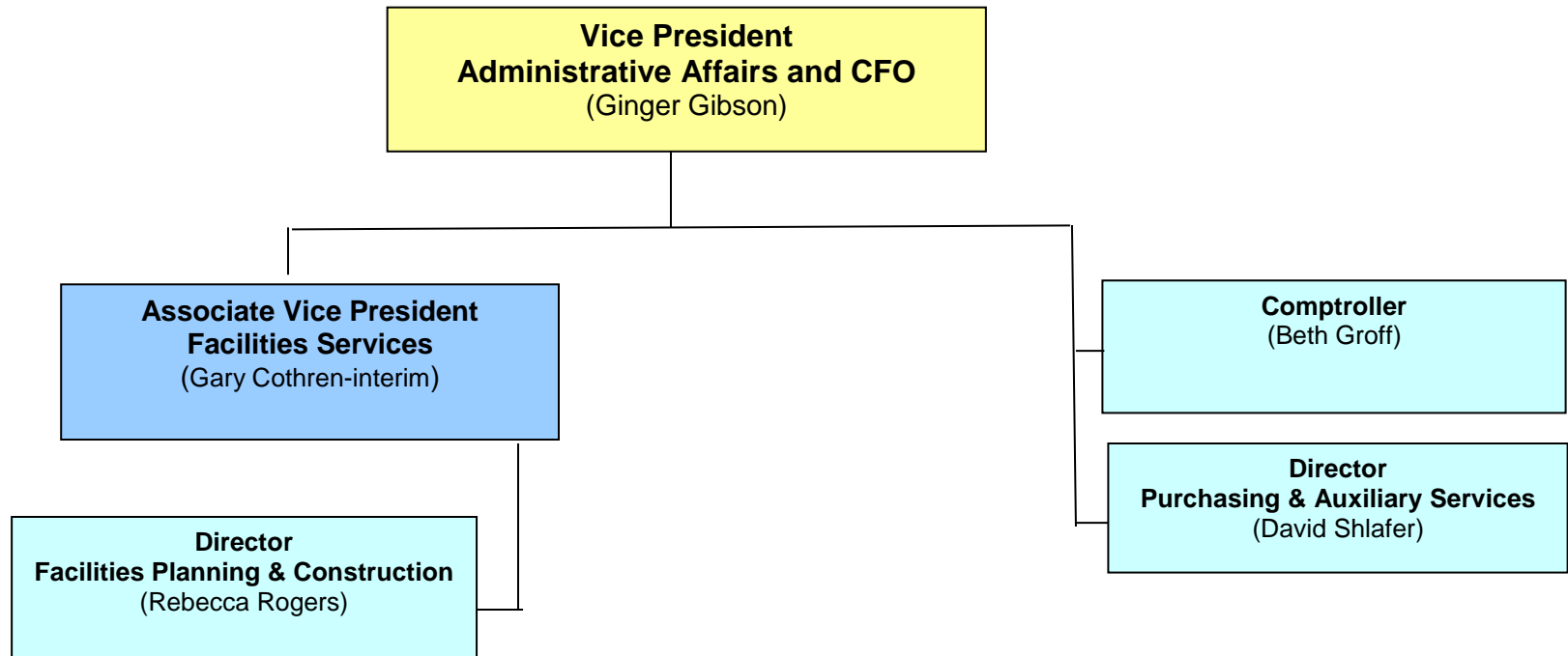
Title:	College Organization	Procedure 2.2P
Based on:	Rule 2.2	
Effective Date:	April 9, 2018	

The President has approved the attached college organizational charts after review by Cabinet.

Academic Affairs 2017-2018

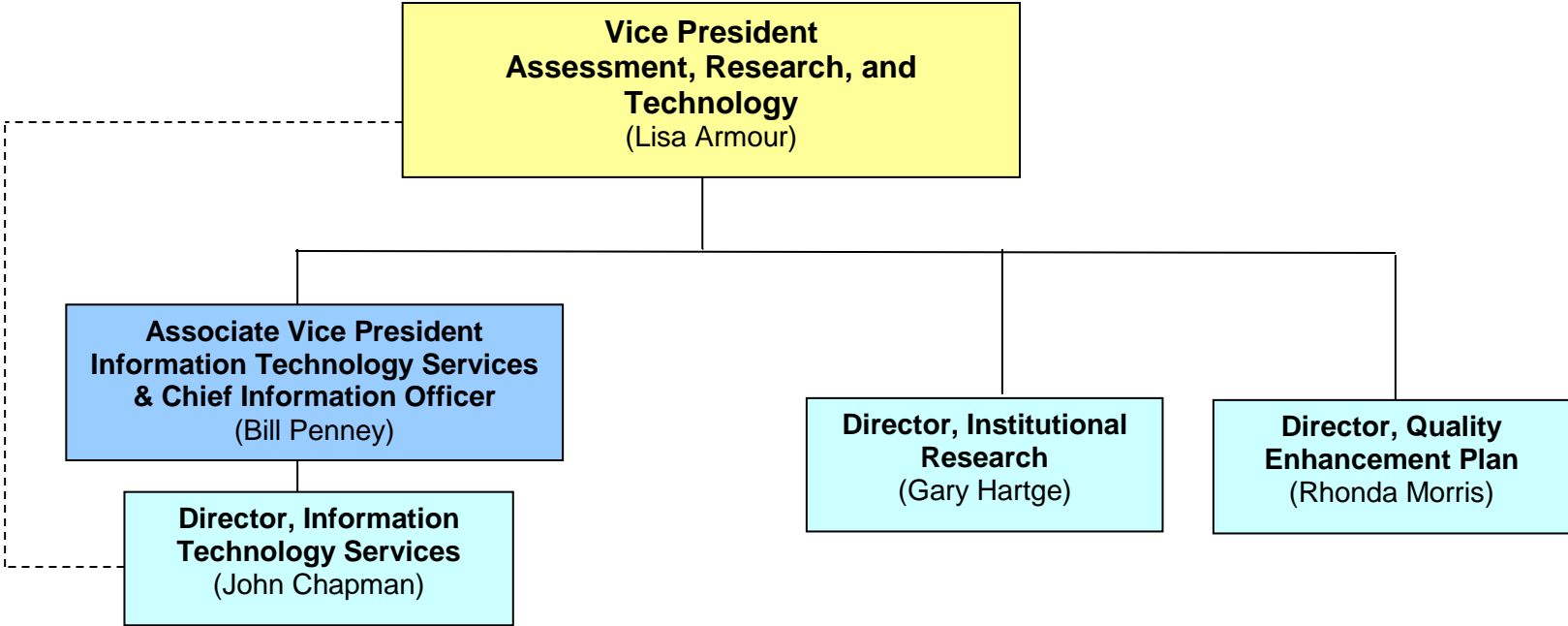


Administrative Affairs 2017-2018

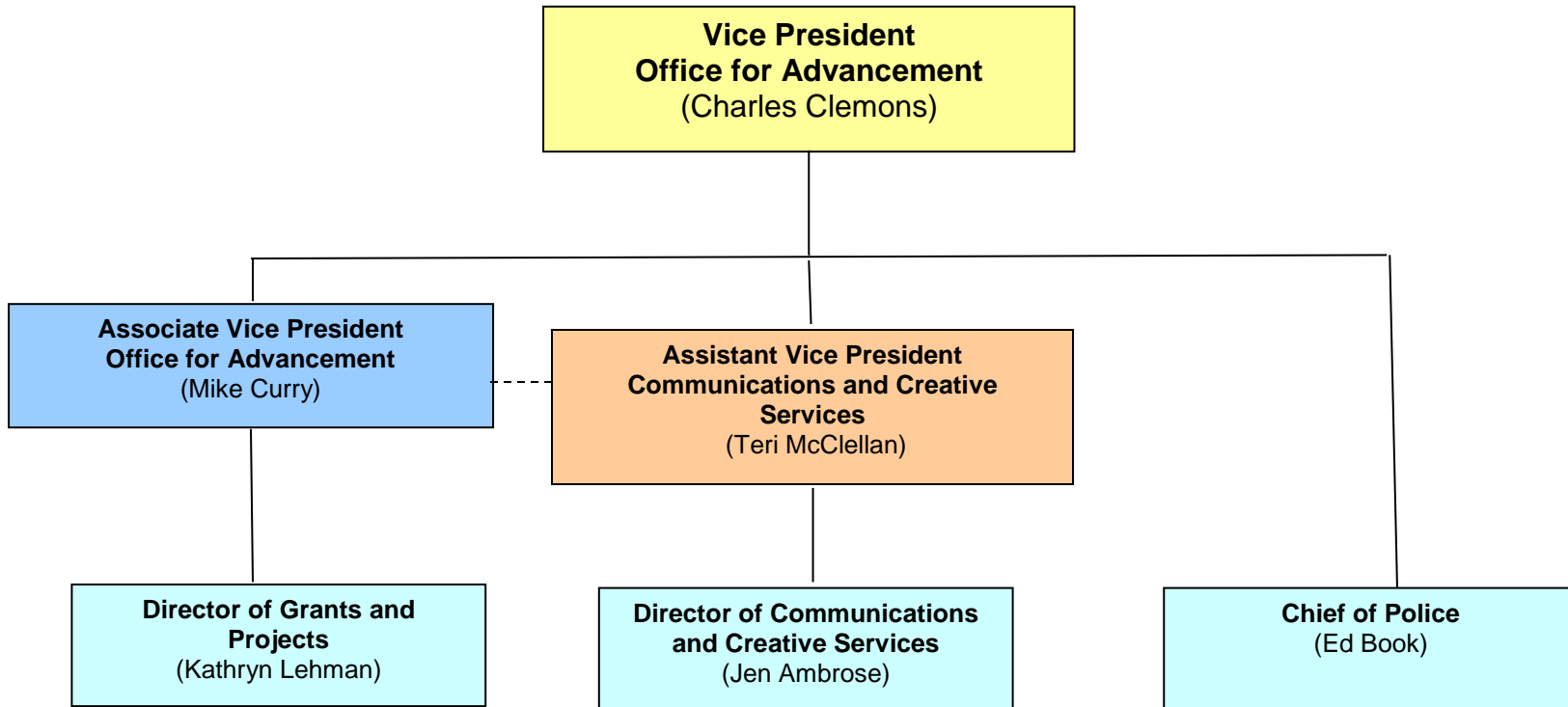


Effective April 9, 2018

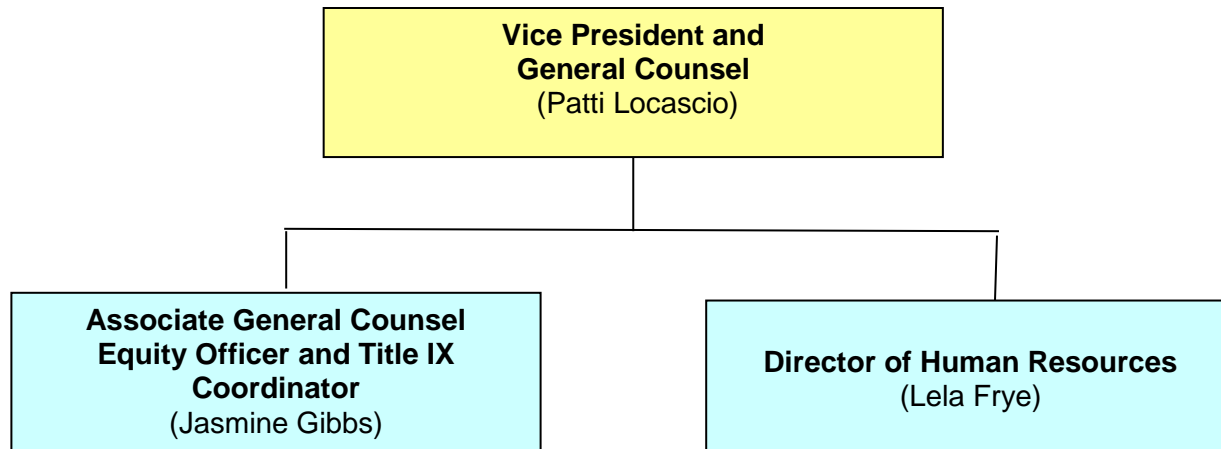
Assessment, Research, and Technology 2017-2018



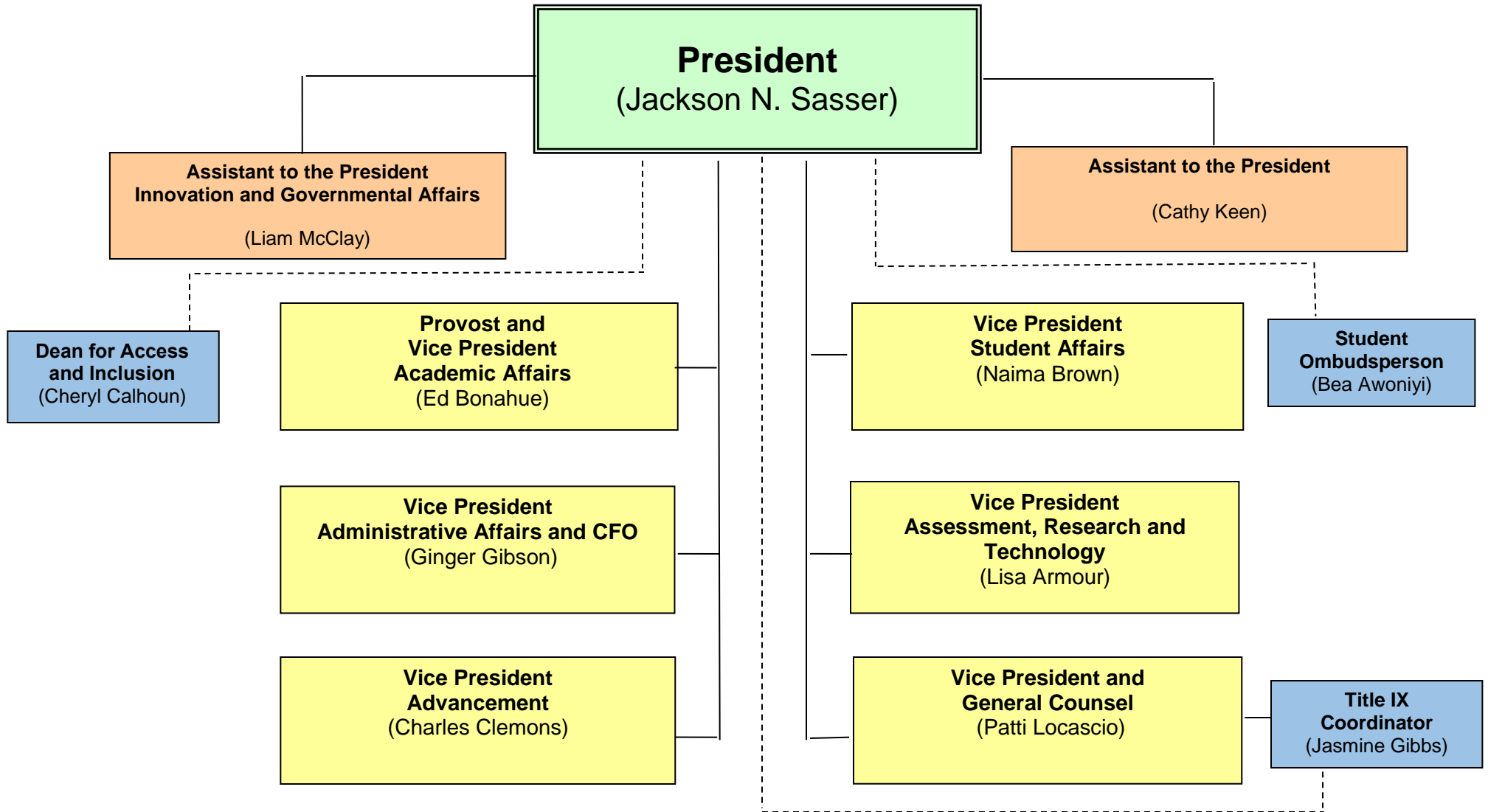
Office for Advancement 2017-2018



Office of the General Counsel 2017-2018



Office of the President 2017-2018



Student Affairs 2017-2018

