

Navigating the College Experience

Santa Fe College
Quality Enhancement Plan

Why a Quality Enhancement Plan?

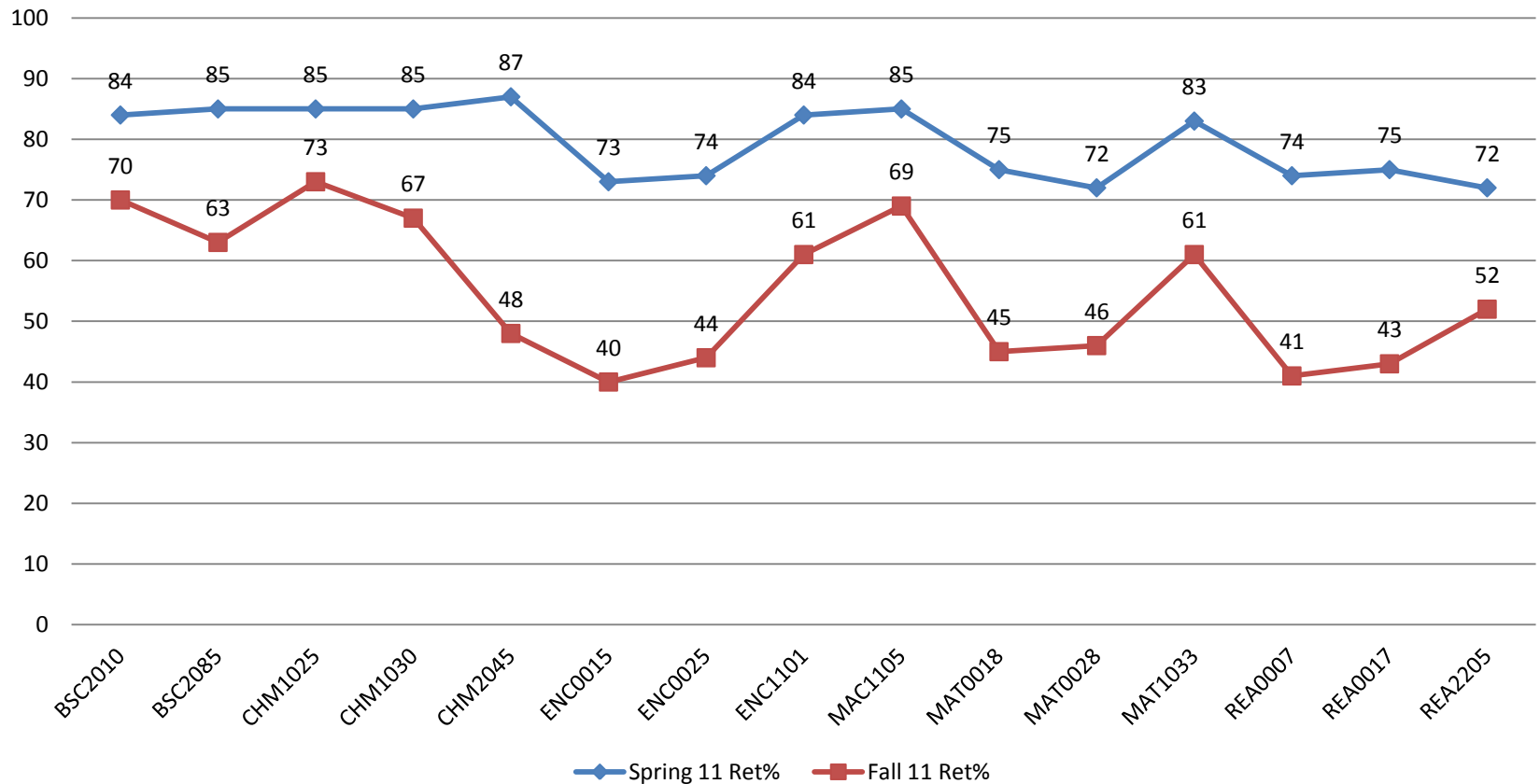
“Never let excellence stand in the way of improvement.”

– Dr. C. Jefferson

- SACS Core Requirement 2.12
- Data-driven project implemented over 5 years
- Results in student learning
- Supports the mission of the institution

Gateway Course Retention

Line Graph %



➤ The line graph above shows the trend of retention rate among the developmental courses that have been chosen by QEP Committee.

Dept. of Institutional
Research & QEP Committee

The Goal of Our QEP

To improve the student learning environment by implementing an integrated system of intentional intervention and progressive advisement, thus increasing students' skills associated with perseverance in educational goals.

Navigating the College Experience

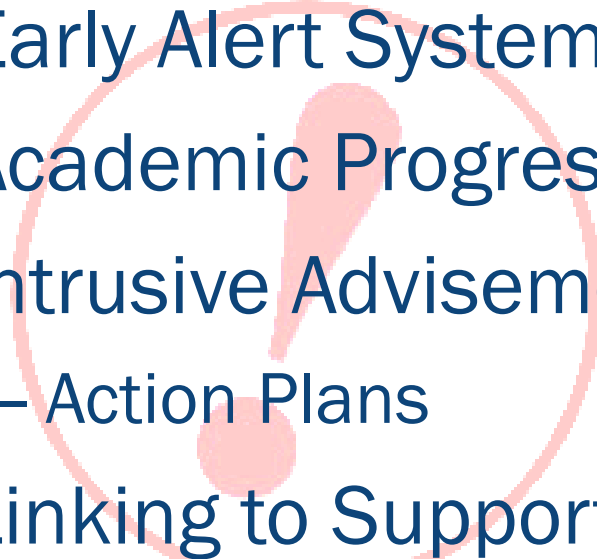
Institutional Support
+
Student Responsibility

Navigational Ability

Progressive Advisement & MAP

- Mandatory Orientation & Initial Academic Advisement
 - Personal Inventory
- Advisement Workshop
 - MAP

Intentional Intervention & Action Plan

- Early Alert System
 - Academic Progress Reporting
 - Intrusive Advisement
 - Action Plans
 - Linking to Support Services
- 

Expected Results

- **Enhanced Student Skills and Behaviors**
 - (Pizzolato, 2006; Shugart & Romano, 2008)
- **Improved Academic Success**
 - (Pizzolato, 2008; Steingass & Sykes, 2008)
- **Improved Persistence, Retention, and Completion**
 - (Little, 2010; Pizzolato, 2008; Shugart & Romano, 2008; Zelanek, 2011)
- **Improved Student Satisfaction**
 - (Cuseo, nd; Steingass & Sykes, 2008)



Contact Us

- Visit us at the QEP website
 - www.sfcollege.edu/qep
- Or e-mail us at QEP@sfcollege.edu

Rhonda Morris, Ph. D.
Associate Professor of English
QEP Co-chair for Planning
rhonda.morris@sfcollege.edu

Jodi Long, Ph. D.
Chair, Sciences for Health Programs
QEP Co-chair for Planning
jodi.long@sfcollege.edu