

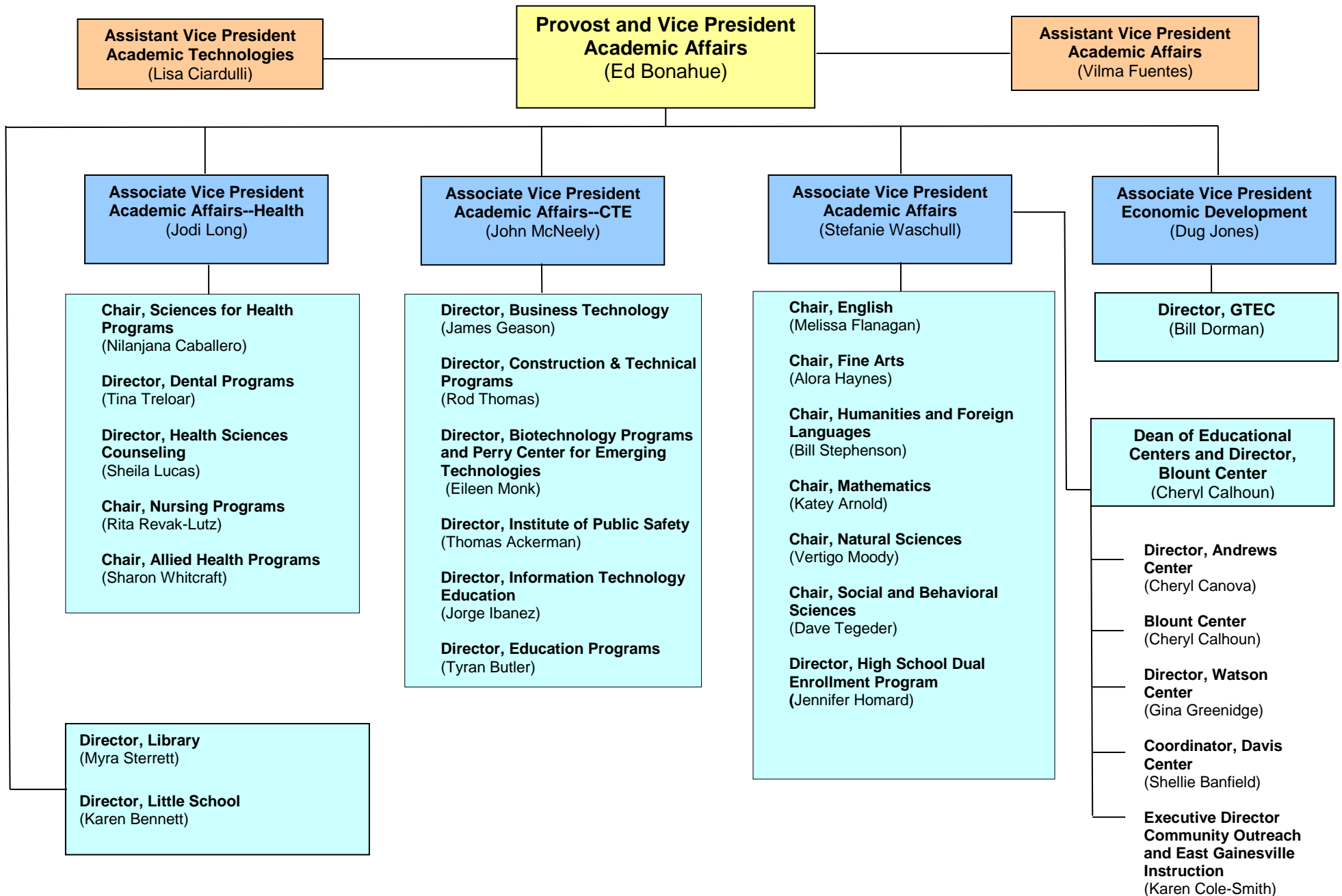


Santa Fe College Rules Manual

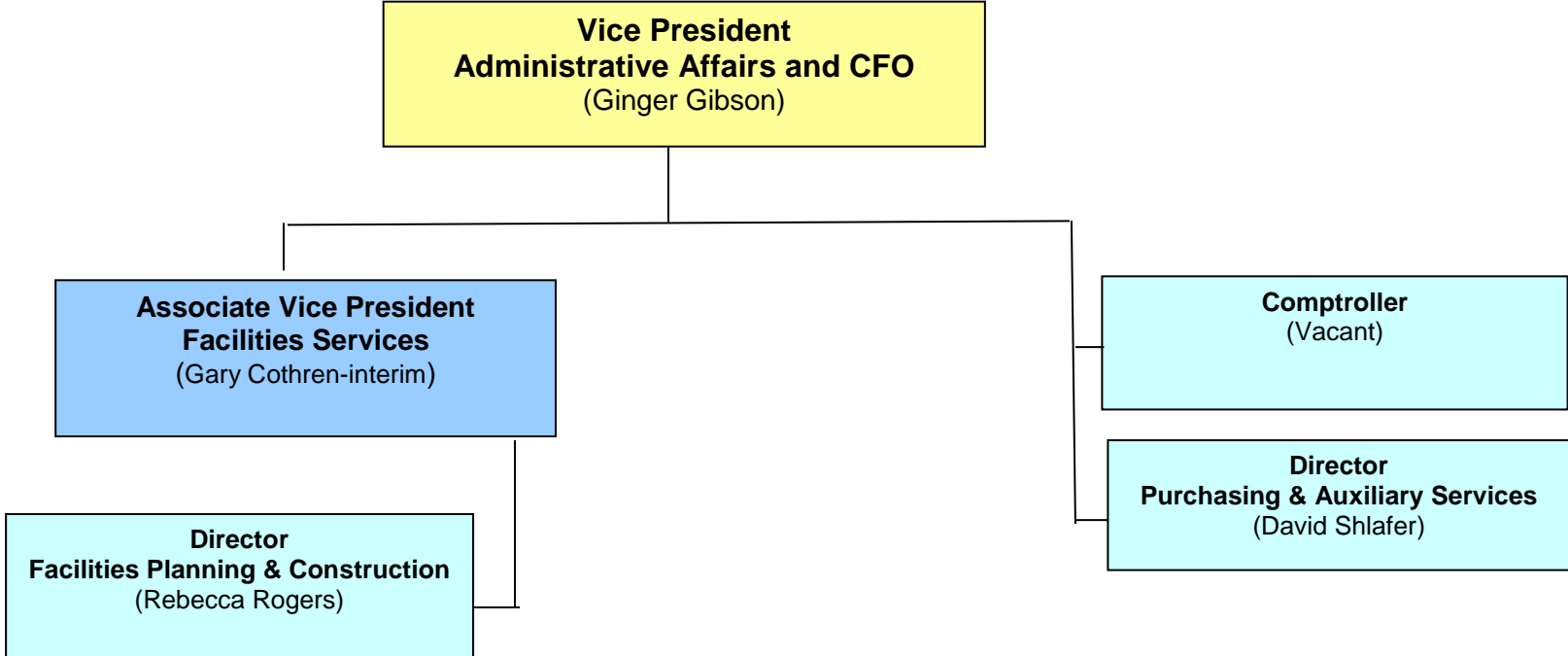
Title:	College Organization	Procedure 2.2P
Based on	Rule 2.2	
Effective Date:	June 12, 2017	

The President has approved the attached college organizational charts after review by Cabinet.

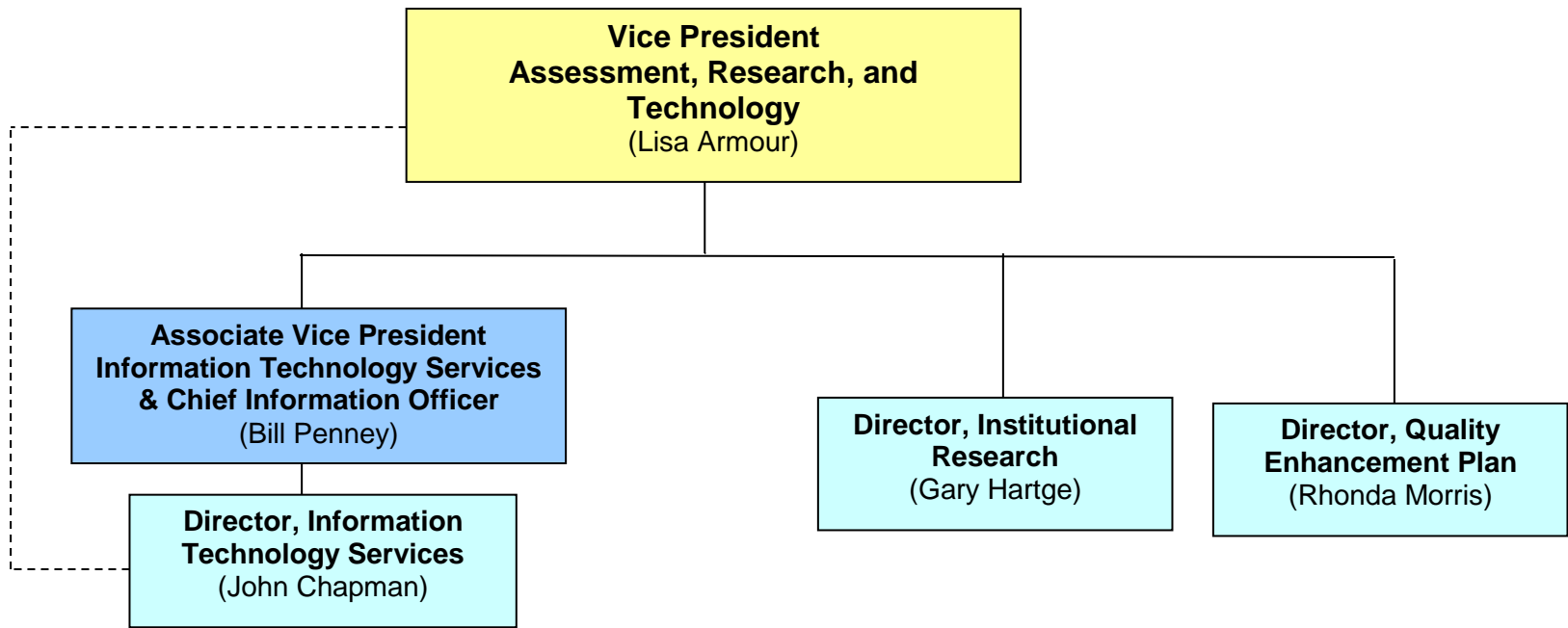
Academic Affairs 2016-2017



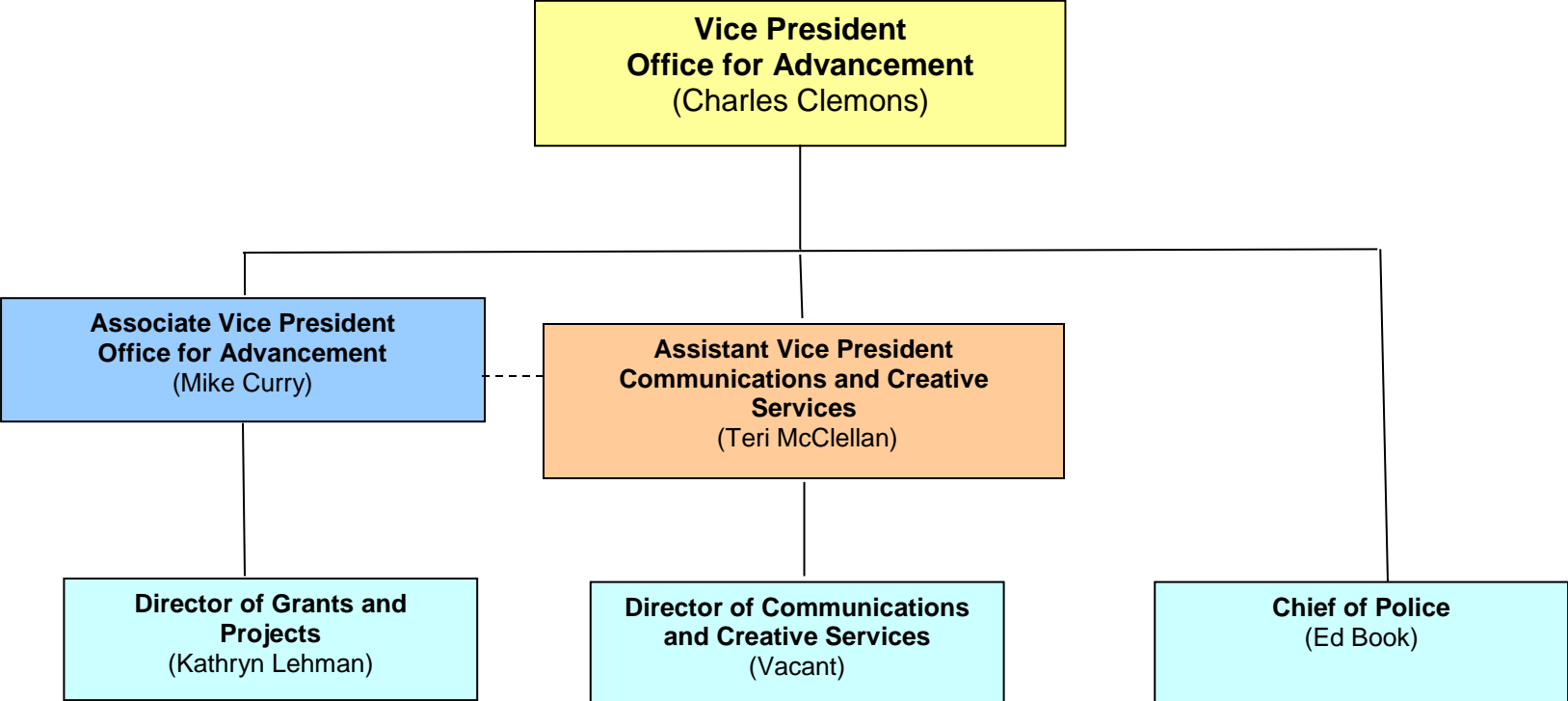
Administrative Affairs 2016-2017



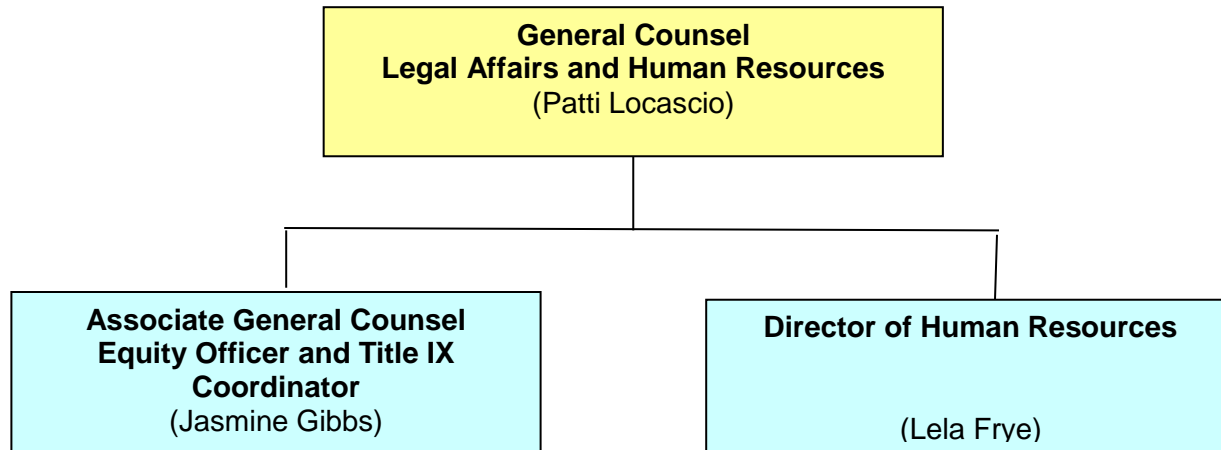
Assessment, Research and Technology 2016-2017



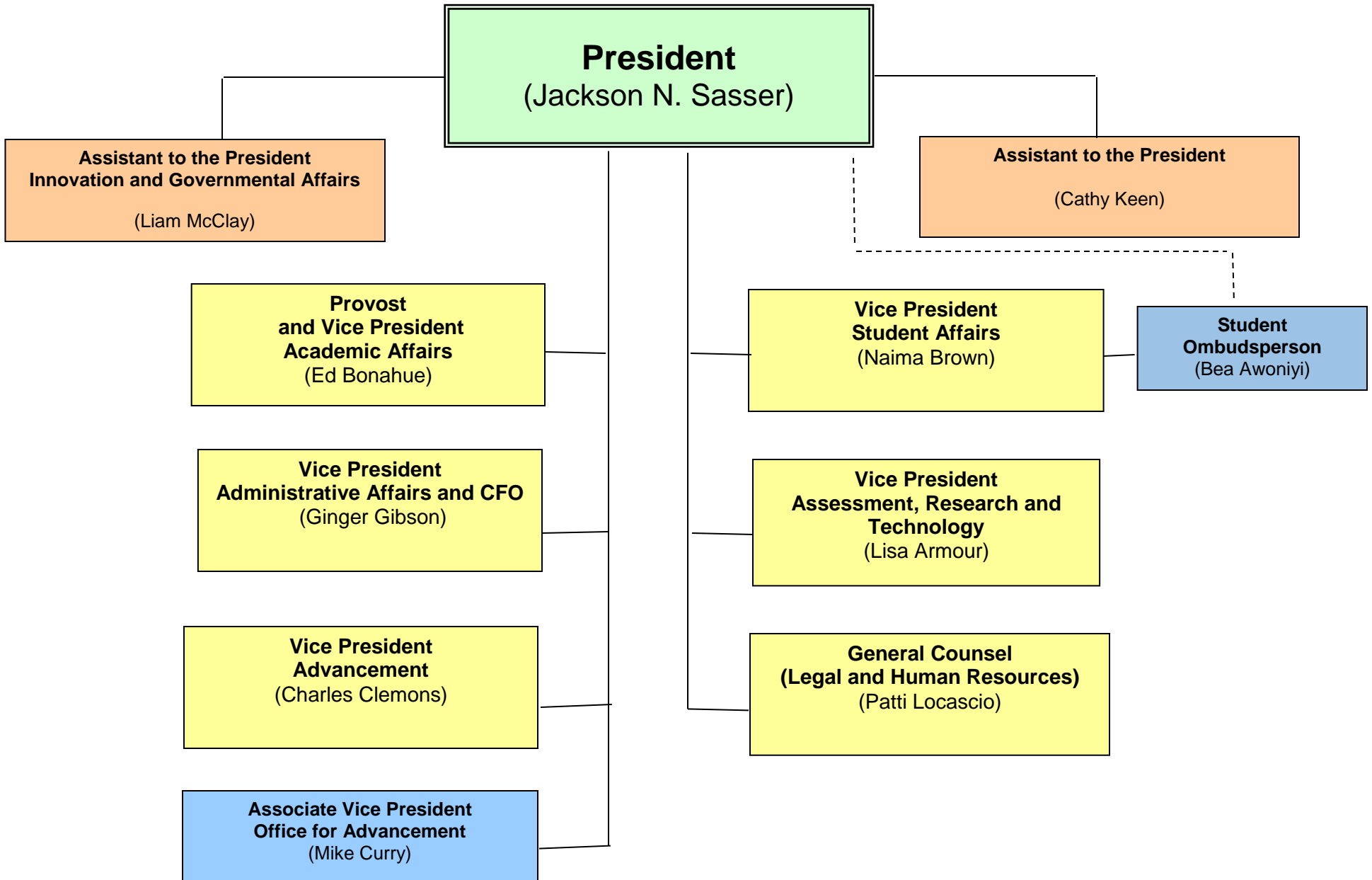
Office for Advancement 2016-2017



**General Counsel
Legal Affairs and Human Resources
2016 - 2017**



Office of the President 2016-2017



Effective June 12, 2017

Student Affairs 2016-2017

